



WAIN HOMES NORTHWEST
6 HARVARD COURT, QUAY BUSINESS CENTRE
WARRINGTON, WA2 8LT
Telephone: (01925) 237370

LEGEND

- Existing Trees to be retained
- Trees to be removed
- Proposed Tree and Structure Planting
- Existing Hedgerow to be retained
- 1200mm High Plot Divisional Fencing
- 1800mm High Timber Screen Fencing
- Denotes Shared Drive Areas
- Bin Collection Points
- Shed position (Cycle Storage)

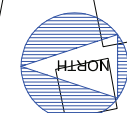
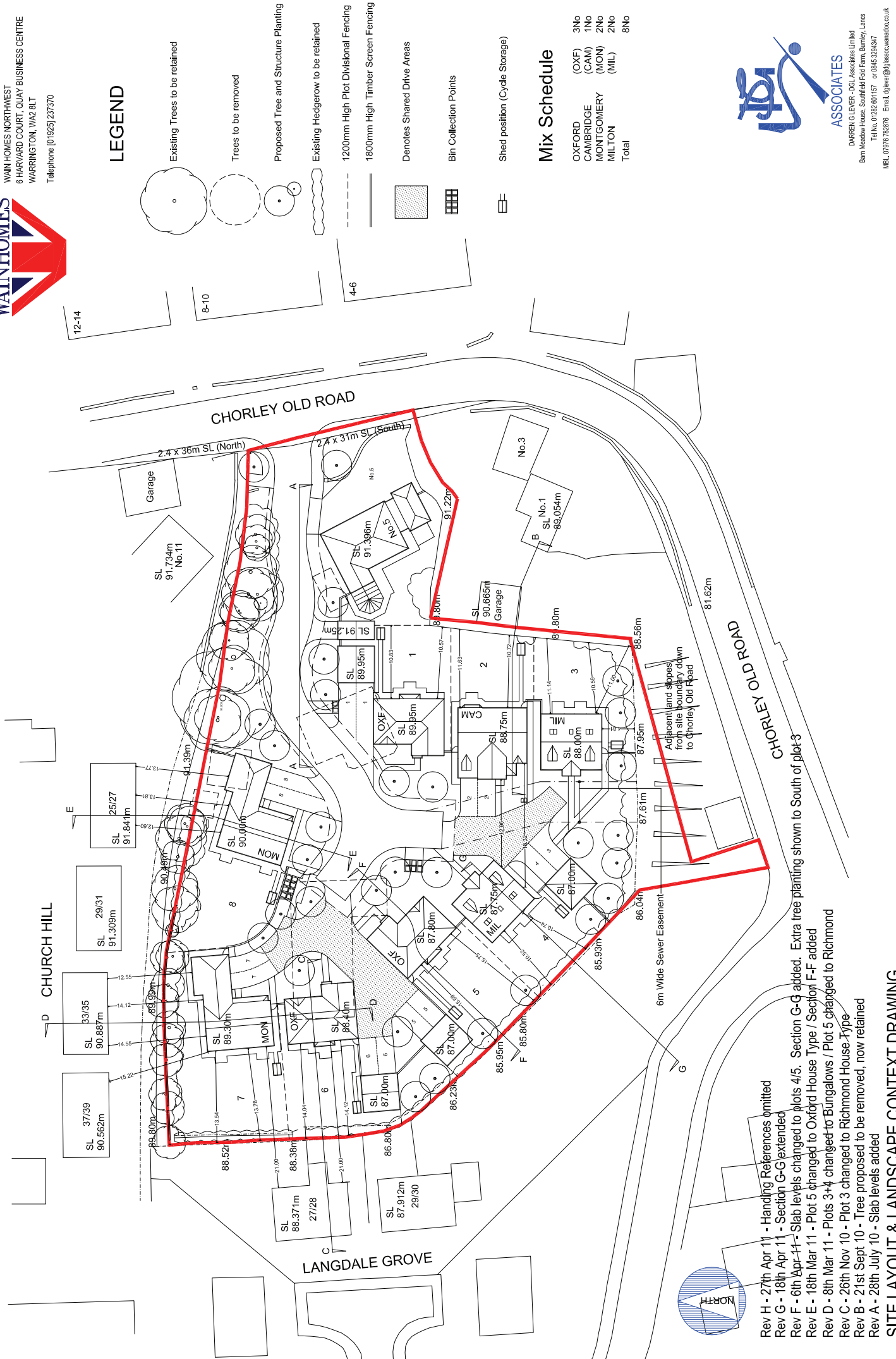
Mix Schedule

OXFORD (OXF)	3No
CAMBRIDGE (CAM)	1No
MONTEGOMERY (MON)	2No
MILTON (MIL)	2No
Total	8No



ASSOCIATES

DARREN G LEVER - DGL Associates Limited
Bain Meadow House, Southfield Fold Farm, Burnley, Lancs
Tel No. 01282 691157 or 0845 3294347
M.B.L. 01975 752876 Email: dglever@dglas.co.uk



- Rev H - 27th Apr 11 - Handing References omitted
- Rev G - 18th Apr 11 - Section G-C extended
- Rev F - 6th Apr 11 - Slab levels changed to plots 4/5. Section G-G added. Extra tree planting shown to South of plot 3
- Rev E - 18th Mar 11 - Plot 5 changed to Oxford House Type / Section F-F added
- Rev D - 8th Mar 11 - Plots 3+4 changed to Bungalows / Plot 5 changed to Richmond
- Rev C - 26th Nov 10 - Plot 3 changed to Richmond House Type
- Rev B - 21st Sept 10 - Tree proposed to be removed, now retained
- Rev A - 28th July 10 - Slab levels added

SITE LAYOUT & LANDSCAPE CONTEXT DRAWING

CHORLEY OLD ROAD, WHITTLE-LE-WOODS

1:500 @ A3 / 16th Jul 10 / Dwg No. DGL/1168WHD/WLW-SL01 Rev H